

## CASE STUDY

Buro Maxim, Buro Lindis

### SITE

The Village Presbyterian Church,  
Christchurch, New Zealand  
[villagechurch.nz](http://villagechurch.nz)

### BURO PRODUCT FEATURED

*Buro Maxim chairs*  
*Buro Lindis 4 Leg chairs*

### COMPLETION DATE

May 2017

### SUPPLIED BY

Canterbury Office Furniture  
[cof.co.nz](http://cof.co.nz)

### ARCHITECT

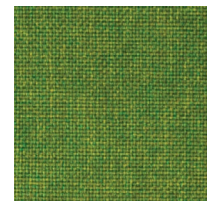
Dalkie Architecture Ltd  
[dalkiearchitecture.com](http://dalkiearchitecture.com)

### THE PROJECT

The new Village Presbyterian Church in Christchurch was fitted with 140 Black Buro Maxim chairs.

70 of the Buro Maxim chairs had custom upholstered seat pads - Textilia At Work - Quantum (Lawn), which added a splash of colour to the interior of the church.

The Church also features Buro Lindis 4 Leg chairs with arms.



^

#### CUSTOM UPHOLSTERY

TEXTILIA AT WORK - QUANTUM (LAWN)

*A plain textured fabric suitable for use in commercial, hospitality and education. This anti-static, non-allergenic fabric is resistant to moisture, stains and soiling.*

<

THE VILLAGE PRESBYTERIAN CHURCH,  
CHRISTCHURCH

Photo taken before building completion